

Hako Rotobic

Fusion-FX CLASSIC

HIGH SPEED BURNISHER WITH SUCTION



Parts Manual and Owners Guide

Hako Australia Pty Limited
ABN 43 002 858 059

90 Wetherill St North, Silverwater NSW 2128
PO Box 6426, Silverwater NSW 1811

Telephone: +61 2 8756 4700 Fax: +61 2 8756 4799
Freecall within Australia: 1800 257 221

Email: hksales@hakoaustralia.com.au

www.hakoaustralia.com.au

An ideal cleaning
solution from
Hako Rotobic.

PACKAGING

- Fusion-FX is despatched in two cartons. The cartons contain the handle and chassis assembly.

HANDLE ASSEMBLY

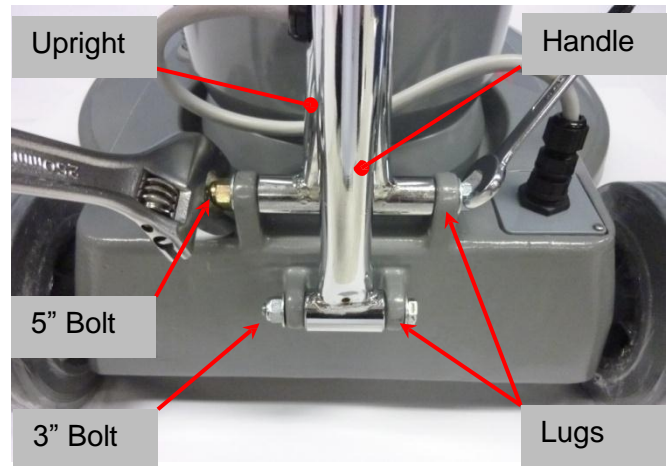
- Remove the 5" bolt from the handle support lugs.
- Fit the handle between the chassis lugs. Insert bolt with washer under bolt head through lugs and handle stem. Tighten nut with washer under nut head until no side movement is evident and handle is free to rotate.
- Remove 3" bolt from handle upright support lugs and repeat the above procedure.

ELECTRICAL CONNECTION

- Align 4 pin bayonet socket from handle with plug base on chassis, and lock into place, refer to Pic.2.

HANDLE ADJUSTMENT

- To adjust handle height, release the handle clamp by rotating the handle lever shown in Pic 3 clockwise, adjust handle to comfortable waist height, then lock into position, by rotating the lever counter clockwise.
- Do not use excessive force to lock.
- Do not adjust the back of the handle clamp shown in Pic 4.



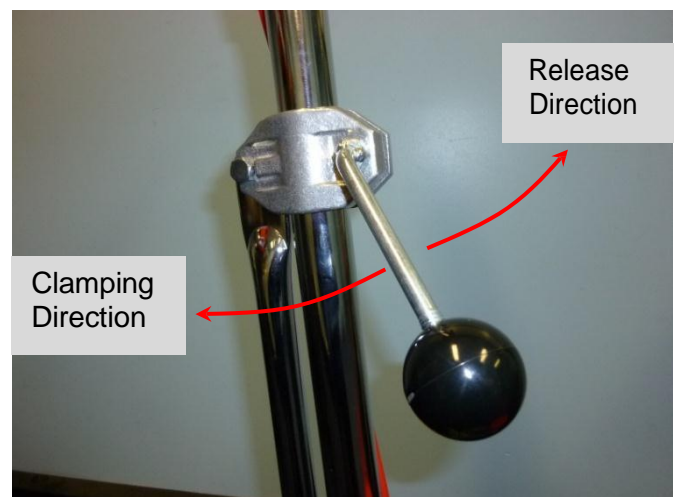
Pic 1 Fusion-FX Classic Handle Assy



Pic 2 Electrical Connection



Pic 4 Factory Connection



Pic 3 Handle Adjustment

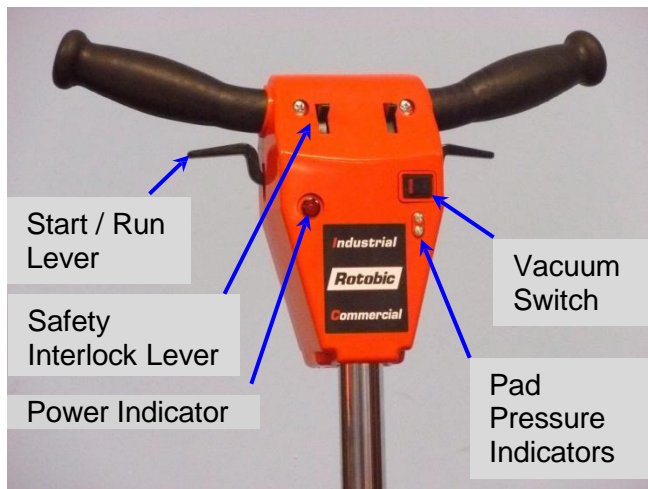
PAD SIZE

- Use 25mm thick, 50cm diameter synthetic high speed pads. Pads containing natural fibre may release odours which can be confused with burning smells, and are not recommended.

FITTING PADS

- Raise the handle into an upright position and lay machine back onto the floor refer to Pic 5
- Remove the Pad Retainer (left hand thread).
- Fit the high speed pad central to the drive.
- Engage the Pad Retainer screwing it firmly into position.
- Spin the drive by hand to ensure the pad runs concentrically. Reposition if necessary. A non centrally position pad may cause the machine to vibrate.

HANDLE INDICATOR AND CONTROLS



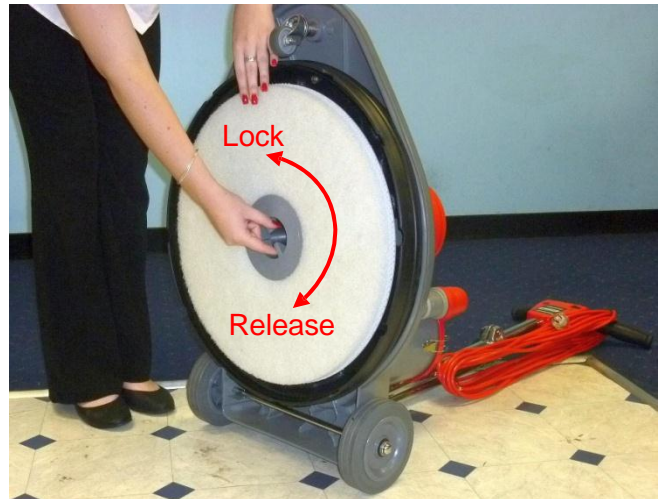
Pic 6 Handle Indicators & Controls

MOTOR CONTROLS



Pic 8 Motor Thermal Overload Switch

When the motor has switched off from overheating, allow sufficient time for it to cool, then press switch to reset as shown in Pic 8.



Pic 5 Attaching a Pad

SKIRT FITTING

- The Skirt Assembly is a slip on fit to the Cover refer to Pic 7. Check that the skirt is sitting evenly on the floor.



Pic 7 Skirt Attachment

SAFE USE

- Ensure that this Manual has been read and understood by the operator.
- This appliance is not intended for use by young children or infirm persons without supervision
- Only trained operators should use this appliance and be familiar with its adjustment and use.

START UP

- Unwind the electrical cord and plug into power point.
- Adjust handle to comfortable waist height refer to Pic 12
- Check that the power indicator lamp is ON.
- Push the Safety Interlock Lever forward to dis-engage safety lock refer to Pic 9.
- Squeeze the start/run lever one side only, which will START the machine refer to Pic 10
- Switch the vacuum motor as shown in Pic 14



Pic 12 Handle Height Position & Operation

CONTROL

- Adjust the pad pressure to avoid overloading the machine refer to Pic 11.
- The pad pressure can be increased or decreased by turning the Screw Height Adjuster, clockwise for decreasing the pad pressure or anti-clockwise for increasing the pad pressure refer to Pic 11
- The optimum pad pressure is achieved when the Green light indicator is at its maximum. This occurs just before the Red light indicator comes ON refer to Pic 13

NOTE:

- (1) The optimum pad pressure should be set by the operator during operation. It may take several attempts to optimize the setting.
- (2) The machine should be in constant motion to avoid burning the floor.



Pic 9 Dis-engaging the Safety Interlock



Pic 10 Dis-engaging the Safety Interlock



Pic 11 Pad Pressure Adjustment

- (3) If the Red light occasionally flickers ON during operation, it is due to undulating floors and is not detrimental to the machine.
- (4) Once the height adjustment is set, the Fusion-FX Classic burnisher is operated in a straight forward motion at walking speed.

VACUUM OPERATION

- To operate the vacuum press the switch as shown in Pic 14

PLANNING THE JOB

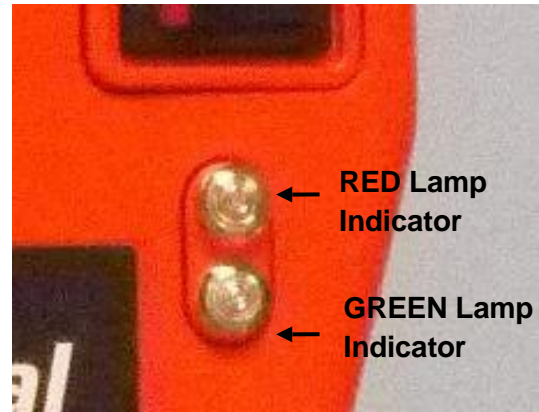
- Plan the work path based on the location of the power point, room/furniture layout, entrance and exit points.
- Work away from the power cord to avoid entanglement with the rotating brush/pad mechanism.
- Ensure that the power cord is clear of the operator's feet to avoid tripping, refer to Pic 15

TRANSPORTATION

- For transporting the machine on level surfaces adjust the handle in an upright position, and transport the machine on the back wheels refer to Pic 16.
- When transporting the machine and stairs are encountered mechanical lifting aids should be used.
- Do not transport the machine up stairs by pulling on the handle, this practice increases forces on the operator that can cause operator injury.
- Where lifting of the machine is inevitable, operators should be trained in team lifting and manual handling techniques.



Pic 16 Transporting the Machine



Pic 13 Pad Pressure Indicators



Pic 14 Vacuum Operation



Pic 15 Planning the Job

PAD MAINTENANCE

- Replace pads that are excessively worn, to reduce the risk of floor damage.
- Wash pads on a regular basis and then store to dry.
- Excessive amounts of polish or embedded in the pad will cause excessive drag that can over load the machine. For best results use clean or new pads.
- Abrasive materials embedded in pads can scratch the floor surface. Ensure clean pads are used.

POWER CORD MAINTENANCE

- Unplug the electrical cord from the power outlet when the machine is not in use, or when cleaning or maintaining the machine.
- Wind the power cord between the handle and cord storage arm from the machine end to reduce knuckling, check for damage, and remove soilage as shown in Pic 17.
- Replace cords that are badly kinked, knuckled, cut or damaged.
- If the cord is damaged it must be replaced with the original manufacturers part and by an Authorized dealer or similarly qualified person.

SKIRT MAINTENANCE

- Remove accumulated dirt and debris from the skirt.
- Check the skirt for tears.
- Replace the skirt when the edges are worn.

FILTER BAG MAINTENANCE

- Access the filter bag by releasing the latches on the Canister Assembly holding the Lid refer to Pic 18.
- To clean, push the bag inside out over a bin, and then brush the surface clean using a soft banister brush or vacuum refer to Pic 19.
- Check the filter bag for perforations and thinning. Replace the bag as necessary.



Pic 17 Cleaning and Checking the Cord



Pic 18 Filter Bag Removal



Pic 19 Filter Bag Maintenance

HAZARD PRECAUTIONS

Unplug electrical plug from the power point before conducting repair, service, maintenance or equipment cleaning.

Electrical

- Do not handle electrical plug or machine with wet hands and power connected.
- Do not store machine outdoors or expose to rain.
- Do not wash or hose down the machine.
- Do not clean the machine by spraying it with water, detergent or cleaning solutions.
- Do not use machine if water has been picked up by the vacuum system, without electrical inspection by a qualified person.
- Do not pull on the Power Cord.
- Work away from the Power Cord to avoid entanglement with the rotating brush/pad mechanism.
- Plan work path based on layout and work area using a systematic approach.

Machine Control and Property Damage

- Ensure correct handle height adjustment for control.
- Fit quality high speed pads, correctly sized, to suit application.
- Ensure the machine is in constant motion over the floor area. Keeping the machine in a localized spot may result in friction burns to the floor.

Trips, Slips and Falls

- Do not wear open top footwear when using this equipment.
- Ensure electrical cord is clear of machine and operators feet.
- Use appropriate signage and barriers e.g. 'Cleaning in Progress' to alert public to cleaning activity.

Burns, Fire, or Explosion

- Do not vacuum anything that is burning or smoking such as cigarettes, matches or hot ash.
- Do not use machine in areas where flammable or combustible liquids, vapors or gases are present.
- Do not operate near explosive materials such as solvents, thinners, fuels or grain dust.

Musculoskeletal Injury

- Change pad using correct posture.
- Adjust handle to correct height and operate machine using correct posture.
- Hold handle firmly at start, relax grip and maintain a straight wrist when machine is running.
- Using mechanical aids or team lifting, when lifting the machine
- Do not pull machine upstairs.

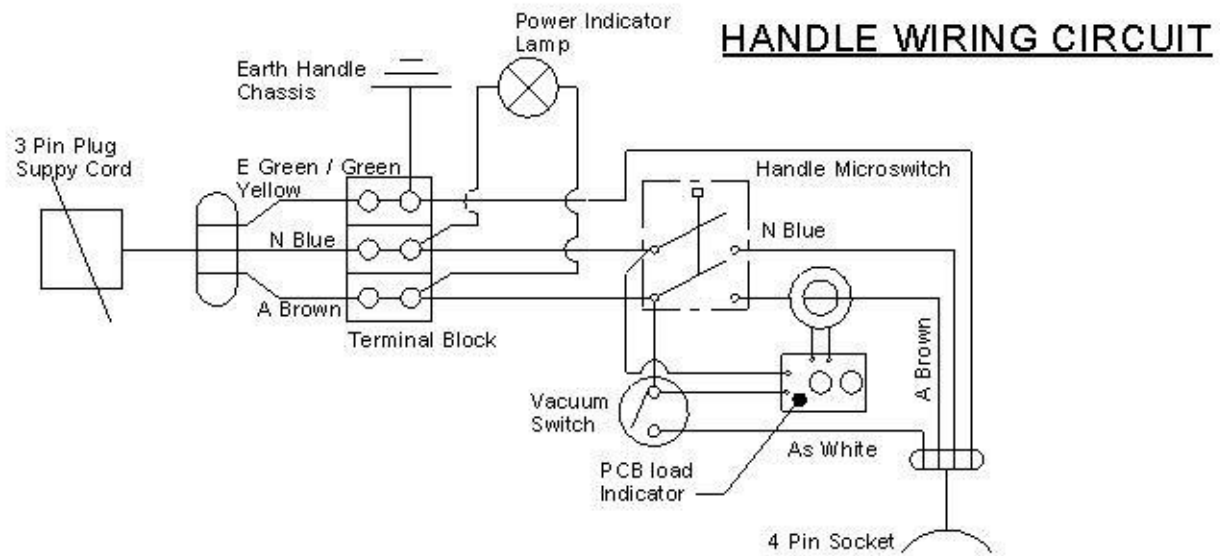
Respiratory Damage/Illness due to Irritant Dust.

- Do not use machine for vacuuming hazardous dust/particulates as defined in clause 50, WorkCover NSW, Occupational Health and Safety Regulation 2001.
- Filtration efficiency, vacuum airflow, particulate size and quantity must be considered in the assessment of emissions.

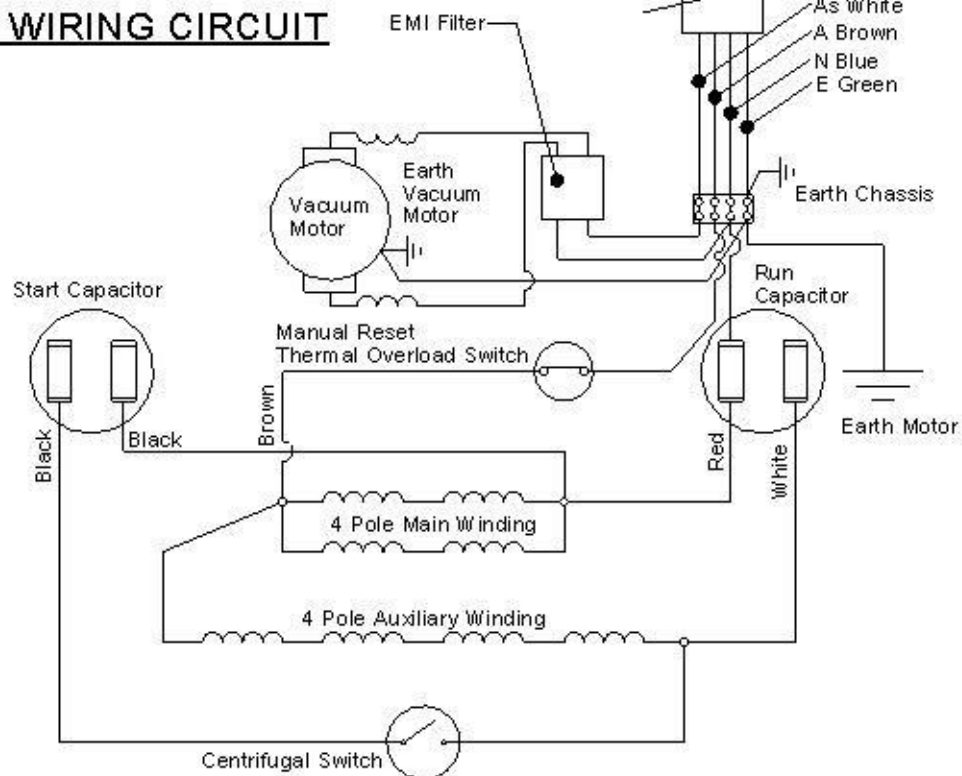
SPECIFICATIONS

Main Motor	Type: Induction 4 Pole CSCR Voltage and Frequency: 220 – 240 Volts a.c. / 50 – 60 Hz Power Output: 1500 watts @ 8.3 amps
Vacuum Motor	Type: Single stage Flo-Thru Voltage and Frequency: 220 – 240 Volts a.c. / 50 – 60 Hz Air Flow: 20 litres/sec
Transmission	Type: Direct drive Output speed: Standard 1440 rpm at 50 Hz Standard 1720 rpm at 60 Hz
Noise	Noise: 68dB _A with beige pad on vinyl flooring.
Filter / Filtration	Media: Polyester 96.9% Efficiency EN 60312 Dust Capacity: 2.5 Litre
Electrical Cord	Type / Length: 15 amp 3 core normal duty 15m long
Handle	Safety: Mechanical interlock Activation: Lever activated double pole micro-switch Stopping: Unattended automatic stop incorporated Adjustment: Lever operated clamp, with infinitely variable height adjustment through 90°
Wheels	Type / diameter: Fixed axle non-marking / 160mm dia.
Weight (No Brush)	41 kg
Brush / Pads	Size: 50cm High Speed Pad Nominal pad.thickness 25mm.
Compliance	Standards: Australian and New Zealand Standards AS/NZS 60335.1 & 60335.2.10
Electromagnetic Conformity	Declaration: Australian and New Zealand Standard AS/NZS CISPR 14.1 Marking: C-Tick Mark N3771

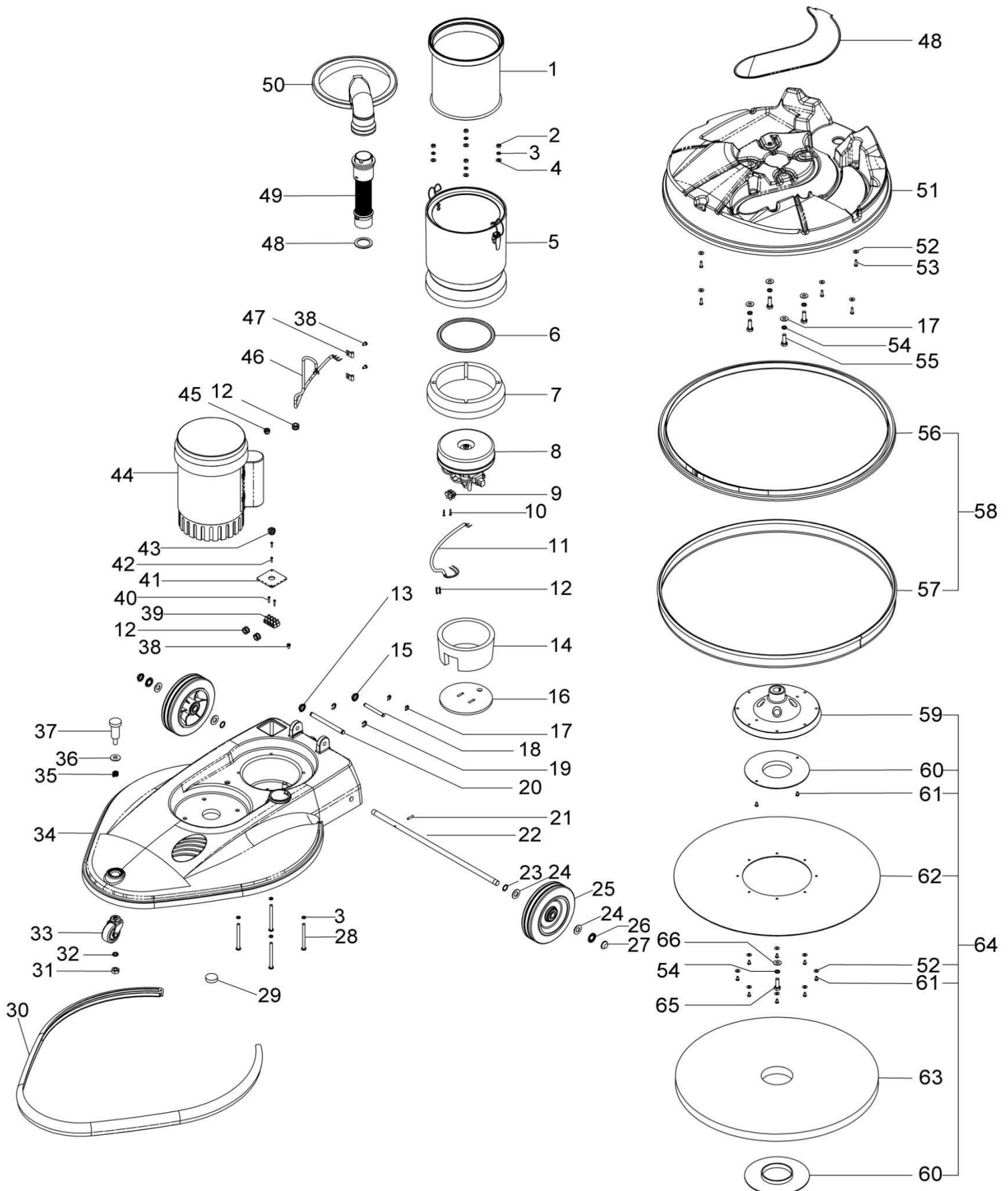
ELECTRICAL CIRCUIT DIAGRAM Fusion-FX Classic



CHASSIS WIRING CIRCUIT



CHASSIS FUSION-FX CLASSIC

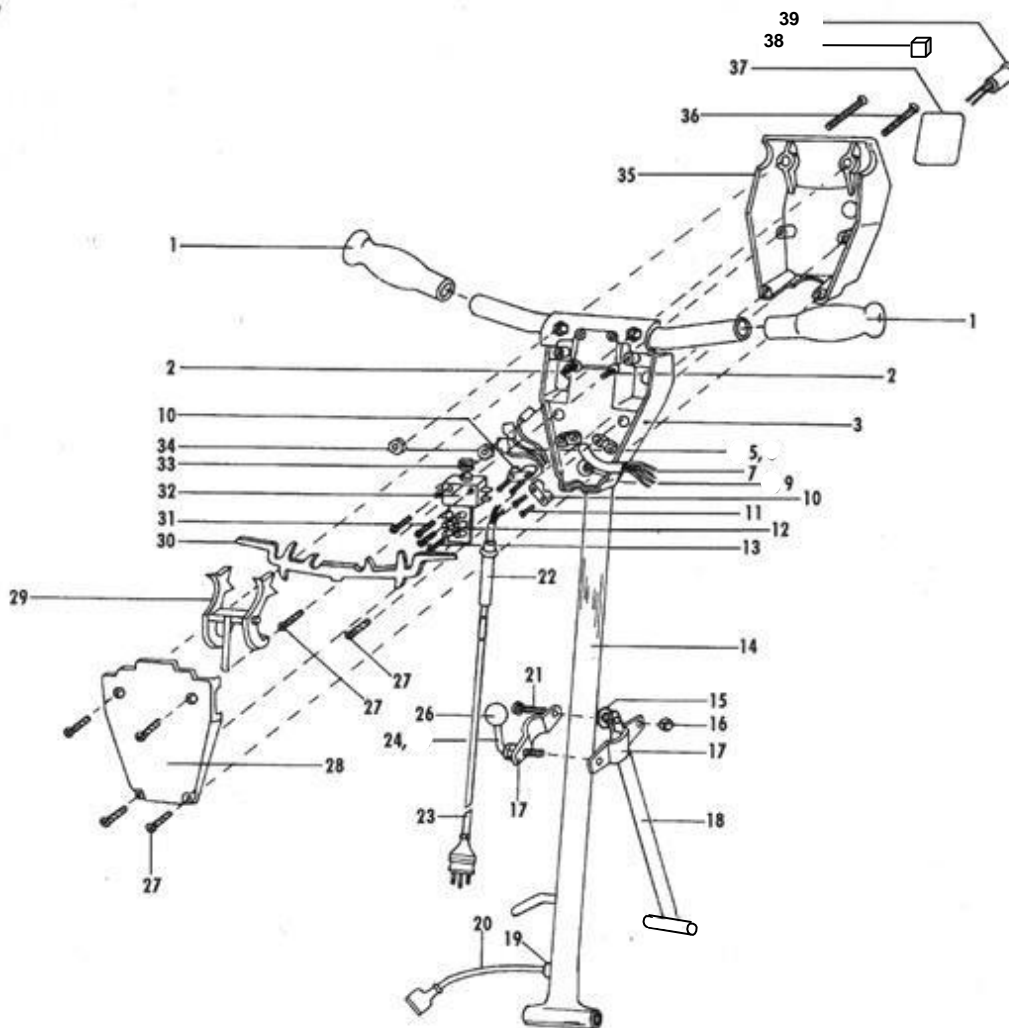


FUSION-FX Classic Chassis Assembly Parts List

ITEM No.	PART No.	DESCRIPTION	QTY
1	13250001	Filter Bag Polisher 167Dia x 125L PE	1
2	13330011	Nut Hex 1/4 Hex Steel ZP	4
3	13420022	Washer 1/4 x 1/16 x 1/16 SQ Sprg ZP	8
4	13420020	Washer 1/4 x 1/2 x 18# Flat ZP	4
5	13227706	Canister Polisher Assy	1
6	13260010	Gasket Ring 150 OD x 12 x Section	1
7	13280007	Insulation Strip Wall Canister	1
8	13320002	Motor Vac 200W Single Stage Flo-Thru	1
9	13217000	Bracket EMI Filter Assy	1
10	13380041	Screw No. 10 x 1/2 S/T Pan ZP	2
11	13220006	Cord Vacuum Fusion FX Classic	1
12	13260002	Grommet 8.7x12.7x6.4 Panel	3
13	13330013	Nut 3/8 Hex UNC Nyloc	1
14	13280006	Insulation Vac Chamber Wall Chassis	1
15	13330012	Nut 5/16 Hex UNC Nyloc	1
16	13280005	Insulation Disc Vac Chamber Base	1
17	13420025	Washer 5/16 x 3/4 x 18# Flat ZP	2
18	13210012	Bolt 5/16 UNC x 3 Hex ZP	1
19	13420030	Washer 3/8 x 3/4 x 18# Flat ZP	2
20	13210020	Bolt 3/8 UNC x 5 Hex ZP	1
21	13350011	Pin M4 X 20 Roll ZP	1
22	13200002	Axle Fusion-FX 12.7 O.D. CrP	1
23	13420038	Washer 1/2 S/Steel Wave Plain	2
24	13420036	Washer 1/2 x 1 x 16# Flat ZP	4
25	13420101	Wheel 160mm Fusion-FX	1
26	13420039	Washer Starlock 1/2 UC D6143 ZP	2
27	13220023	Cap Axle 1/2 CP	2
28	13380062	Screw 1/4W x 3 M/T RDHD ZP	4
29	13390003	Tube 19.35 x 26.5 x 21.4L MS	1
30	13210006	Bumper Fusion-FX	1.6
31	13330014	Nut M10 Hex Lock ZP	1
32	13420032	Washer 3/8 x 3/32 x3/32 SQ Sprg ZP	1
33	13420102	Wheel Castor 50mm	1
34	13220022	Chassis Fusion-FX Classic	1
35	13380013	Spring Compression Fusion-FX	1
36	13420031	Washer 3/8 x 1 x 16# Flat ZP	1
37	13380100	Screw Height Adjuster Fusion-FX	1
38	13380040	Screw No.10 x 3/8 Pan Taptite Trilobe ZP	1
39	13390006	Terminal Block 500-35DS 12 Way	0.33

ITEM No.	PART No.	DESCRIPTION	QTY
40	13380017	Screw No. 4 x 5/8 S/T Pan ZP	2
41	13350002	Plate Gland Fusion-FX Classic	1
42	13380016	Screw No. 4 x 1/2 S/T Pan ZP	2
43	13227703	Connector Panel Lock Assy	1
44	13320000	Motor Polisher CMG 1500 W	1
	13300001	Key Motor 3/16 x 3/16 x 1	1
	13220035	Cap Start 108-130µF 86 x 46	1
	13220036	Cap Run 30 µF 45 x 92 DQC	1
	13220040	Cover Cap. Start	1
	13220041	Cover Cap. Run	1
	13380006	SwitchThermal Overload Manual	1
	13250015	Fan Plastic 22mm	1
	13420060	Washer Fan Pressed Steel	1
	13220042	Cowl Plastic Motor Housing	1
	13380007	Switch Centrifugal	1
	13350016	Plate Switch	1
45	13210002	Bush Strain Relief 766-1147B	1
46	13220005	Cord Motor Fusion-FX Classic	1
47	13220009	Clamp 'P' Dia. 6.4 Mtg Hole 5.2	1
48	13280008	Insulation Inlet/Exhaust Fusion	1
49	13277002	Hose Inlet Assy Fusion-FX	1
50	13310005	Lid Canister Red	1
51	13220025	Cover Inner Fusion-FX	1
52	13420015	Washer 3/16 x 1/2 x 20# Flat ZP	14
53	13380042	Screw No. 10-16 x 16 Teksc C2	6
54	13420027	Washer 5/16 x 5/64 x 5/64 Sprg Z	5
55	13210010	Bolt 5/16W X 1 Hex ZP	4
56	13250011	Fabric Skirt Fusion-FX	1
57	13240002	Extrusion LDPE Skirt Fusion-FX	1
58	13387001	Skirt Assy Fusion-FX	1
59	13227711	Coupling Assy	1
60	13370001	Retainer Big Mouth Set (R.)	1
61	13380033	Screw No. 8 x 3/4 Hex Streaker	10
63	13350040	Pad UHS 50cm Beige/Kangaroo	1
64	13227710	Coupling Drive Assy	1
65	13380070	Screw M8 x 25 Set Hex ZP	1
66	13420026	Washer 5/16 x 1-1/4 x 12# Flat	1

Fusion-FX Industrial & Commercial Handle



No.	Part Name	Part No.	Qty
	Handle Fusion-FX IC Assy	13277070	
1	Handle Grip	13270005	2
2	Pin M6 x 20 Dowell CP	13350010	2
3	Housing Handle Lower Fusion-FX IC	13270002	1
5	PCB Fusion-FX & Wiring Assy	13357000	1
7	Insulator Post Fit Utilux H2818	13280000	2
9	Screw No.10 x 3/8 Pan Taptite	13380040	1
10	Clamp Cord Handle IC	13220014	2
11	Screw WN1412 K B 40 X 16 Z	13380026	4
12	Terminal Block ANE	13390005	1
13	Screw No. 6 x 5/8 S/T Pan ZP	13380020	2
14	Tube Handle IC	13390001	1
15	Washer 15.8 x 8.05 x 0.90 Belleville ZP	13420045	1
16	Nut 5/16 Hex UNC Nyloc	13330012	1
17	Clamp Handle IC Set	13220015	1
18	Tube Upright IC	13390000	1
19	Bush Strain Relief Utilux H2097B	13210001	1
20	Cord Handle Fusion-FX IC Assy	13227702	1

No.	Part Name	Part No.	Qty
21	Bolt 5/16W x 1-1/2 Hex ZP	13210011	1
22	Grommet Loom Cord	13260001	1
23	Cord Polisher 3 Core 15m x 15A	13220007	1
24	Lever Handle Clamp IC	13310003	1
26	Knob Handle 41Dia x 3/8 BSW	13300000	1
27	Screw WN1412 K B 50 X 20 Z	13380048	6
28	Housing Handle Lid IC	13270004	1
29	Lever Safety Interlock Handle IC	13310002	1
30	Lever Start/Run Handle IC	13310001	1
31	Screw No. 7 x 25 HiLo Pan ZP	13380025	2
32	Switch Micro 2HP Terminals 2 x Com, 2 x NO	13380002	1
33	Spring Compression Stainless Steel	13380010	1
34	Nut M6 Hex Steel ZP	13330010	2
35	Housing Handle Cover IC	13270003	1
36	Screw M6 x 45 M/T Pan ZP	13380052	2
37	Label Handle IC	13310010	1
38	Switch Rocker Red 15A SPST	13380000	1
39	Indicator Red 240V 0.3W T1200.04 & 152mm Leads	13280002	1

Hako Australia Pty Ltd Warranty Policy

Effective July 1, 2008

Hako Australia Made Simple Limited Warrantly Policy

Hako Australia Pty Ltd warrants to the original purchaser/user that the product is free from defects in workmanship and materials under normal use. Hako Australia Pty Ltd will, oblige under this warranty to repair or replace at our factory or authorised dealer service outlet, parts that fail under normal use and service when operated and maintained in accordance with the Parts Manual and Owners Guide, after examination discloses it to have been defective. All warranty claims must be submitted through a Hako Australia Pty Ltd Dealer or Authorised agent and approved by Hako Australia Pty Ltd.

This warranty does not apply to components replaced due to recommended service schedules, normal wear and tear or to items whose life is dependent on their use and care.

Special warning to purchaser - Use of replacement parts not manufactured or supplied by Hako Australia Pty Ltd will void all warranties expressed or implied. A potential health hazard exists without original equipment replacement.

All warranted items become the sole property of Hako Australia Pty Ltd or its original manufacturer, whichever the case may be.

Hako Australia Pty Ltd disclaims any implied warranty, including the warranty of merchantability and the warranty of fitness for a particular purpose. Hako Australia Pty Ltd assumes no responsibility for any special, incidental or consequential damages.

The limited warranty is applicable only to the original user/purchase of this product. Hako Australia Pty Ltd is not responsible for costs or repairs performed by persons other than those specifically authorised by Hako Australia Pty Ltd. This warranty does not apply to damage from transportation, alterations by unauthorised persons, misuse or abuse of the equipment, use of non-compatible chemicals, or damage to property, or loss of income due to malfunction of the product. If a difficulty develops with this machine, you should contact the dealer from whom it was originally purchased.

Hako Australia Pty Ltd warranty period for Rotobic Focus Scrubber / Polisher for Parts and Labour is one (1) year.

Hako Australia Pty Ltd or Authorized agents are required to submit all invoices when using or claiming for a third party or subcontractor as part of their Warranty claim.

Hako Australia Pty Ltd is to approve or disapprove and clear for payment or credit within 30 days of receiving a complete Warranty claim form from its Dealer or Authorised agent.

Hako Australia Pty Ltd is to advise by writing if a claim is disapproved or the total of the claim is varied from that received.

Hako Australia Pty Ltd if claim is approved, will credit labour and parts to a Dealer or Authorised agent account unless a Tax Invoice for payment accompanies the claim.

Dealer/Authorised agent is required to hold the replaced parts under warranty until approval or disapproval has been received by Hako Australia Pty Ltd for a period of 90 days.

Dealer/Authorised agent is responsible for the freight or equipment and parts returned for warranty. These are to be returned when and only if Hako Australia Pty Ltd specifically requests their return for inspection. Ensure the name of Hako Australia Pty Ltd manager granting approval or requesting these returns is included on the return goods.